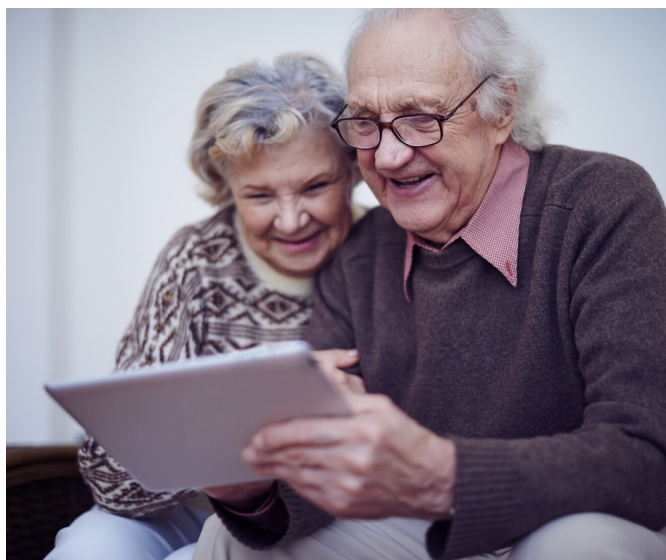




“Tough times never last,
but tough people do.”

Robert H. Schuller

The weather is changing, the sun is beginning to shine more and more, and beauty is starting to bloom. These are the little things we can look forward to despite all that is going on in the world right now. The COVID-19 pandemic has taken a toll on everyone in many ways, but through adversity we will become stronger than ever. The dedication and care that our valued caregivers and providers continuously commit to day-in and day-out proves that tough times make even tougher people. As we continue to persevere through these uncertain times, let's find encouragement in the beautiful things around us and continue to bloom.



Messages of Encouragement with #CareNotCOVID

Millions of long-term care residents around the world are facing increased feelings of loneliness and isolation due to the COVID-19 pandemic. However, the AHCA/NCAL have created the #CareNotCOVID campaign to bring people around the world together by sending encouraging messages to long-term care residents.

[LEARN MORE](#)



Make the Most of Older Americans Month

The Association for Community living (ACL) recognizes the month of May as Older Americans Month annually. This year's Old Americans Month campaign is, "Make Your Mark." Learn more about this year's campaign and how you can encourage your residents to make their mark.

[LEARN MORE](#)



MUTUAL
INSURANCE CO.
INC. A RRG

A Message from PCH

We know everyone is getting anxious to get back to some sense of normalcy. Normal likely includes having new residents move in. PCH is working on some resources related to the pandemic to help, particularly when a new resident is moving in. COMING SOON to the PCALIC website Resource Center.

In the meantime, if you are looking for some feel good news, tune into John Krasinski's Some Good News, <https://www.youtube.com/watch?v=NDjNX3nEfYo>.

We are so proud and grateful for the work you're doing.

Thank you!

- Julie Bordo

President and General Manager

PCH Loss Impact Hotline



PCH Loss Impact Hotline

Remember, the PCH Loss Impact Hotline is available to you as a valued member insured as a resource for help and guidance should an incident occur, and can also be used for questions and concerns regarding COVID-19 as well. For more information, visit <https://pchmutual.com/pch-loss-impact-hotline/>.



Tell us how we're doing!

We understand how dedicated you are to your care operations and how busy you are. If you have a spare moment, we would love to hear your thoughts on how we are doing!

COMPLETE OUR SURVEY

OUR MISSION

The mission of PCALIC is to provide, and maintain quality insurance protection at an affordable price for Adult Residential Care Facilities through streamlined risk management systems.

CONTACT US

PCALIC, LLC
P.O. Box 933
Hanover, PA 17331
Tel: 800.673.2558
info@pcalic.com
www.PCALIC.com

Stay connected with us!



(800)-673-2558

P.O. Box 933, Hanover, PA